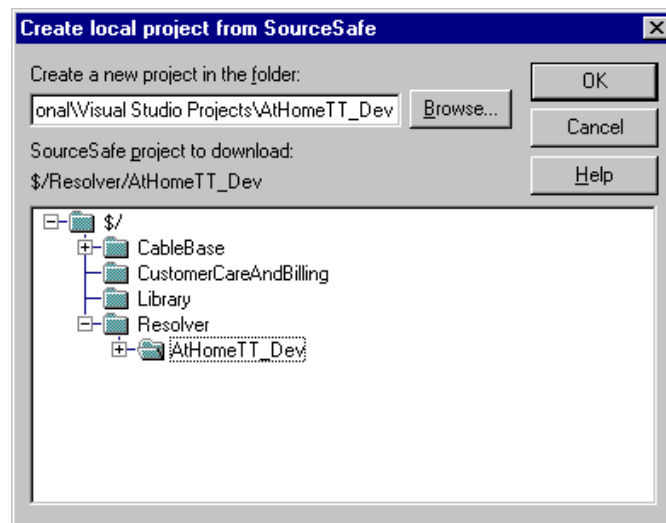


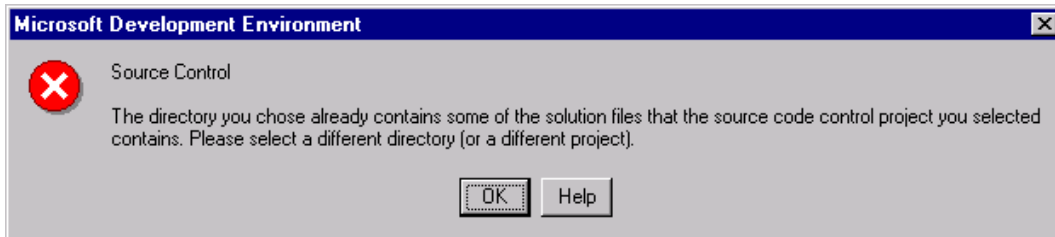
Opening Existing Projects from SourceSafe into Interdev

This procedure is only for developers who have not gone through the Check-In Process described above. These steps need only be performed once, after which a project can be opened just by navigating to the the local version on your PC. These procedures should also be followed after a project has been branched.

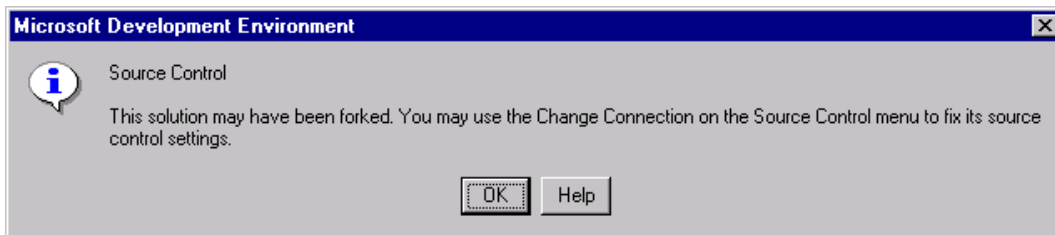
1. Load the SourceSafe client.
2. Right-click the project you'd like to load e.g. Root. Select Set Working Directory.
3. Set the directory to something similar to .../malexandrou/personal/Visual Studio Projects/Root
4. Right-click the sub-project e.g. Root/WebProject. Select Set Working Directory.
5. Set the directory to something similar to .../malexandrou/personal/Visual Studio Projects/Root/WebProject
6. Select Open Project from the File menu in Interdev.
7. Click the Source Control button and log in to SourceSafe.
8. In the SourceSafe project to download tree view, navigate to the location of the solution file that you'd like to load e.g. \$/Resolver/Root. Check that the project folder where your local copy will be stored is correct e.g. .../malexandrou/personal/Visual Studio Projects/Root. Click OK.



9. If you receive a message similar to the one shown below it means that you've already loaded this project. At this point you can delete the directory on your PC or you can just open the project from your local copy.

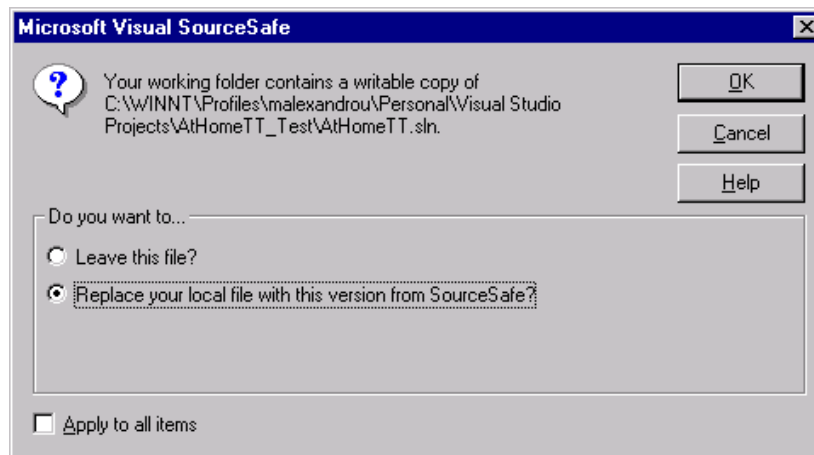


10. You will be prompted to create a directory. Select Yes All.
11. The name of the solution should appear in a dialog box. Double-click the solution file.
12. You will once again be prompted to create a directory. Select Yes All.
13. A dialog will appear indicating that the local state file could not be found. Click OK to allow Interdev to create a new one.
14. If the project has been branched or renamed in SourceSafe, the following dialog will appear. Click OK to continue.



15. Once the solution has been loaded, highlight the solution and go to the Project menu, select Source Control, and then select Change Connection.
16. At the Set Source Control Connection dialog, click the Change Connection button.
17. You will be prompted to log in to SourceSafe. Once that is done, in the SourceSafe project list, navigate to the location of the solution file that you are using e.g. \$/Resolver/Root. Click OK.

18. You may be prompted to replace the current version of the solution file or use the existing one. Select Replace.



19. Highlight the project and go to the Project menu, select Source Control, and then select Change Connection.
20. At the Set Source Control Connection dialog, click the Change Connection button.
21. You will be prompted to type in the location of the project in SourceSafe. Type in something similar to:



22. Set the working mode of the project to Local.
23. Right-click the project and select Get Latest Version. Click OK when a dialog appears with a list of files. This will create local copy of the project for use with PWS.
24. Start the Internet Service Manager and create a virtual directory that points to the local version of the web project e.g. .../profiles/malexandrou/personal/Visual Studio Projects/Root/AtHomeTT_Local. This will allow you to use PWS to view the web application.